



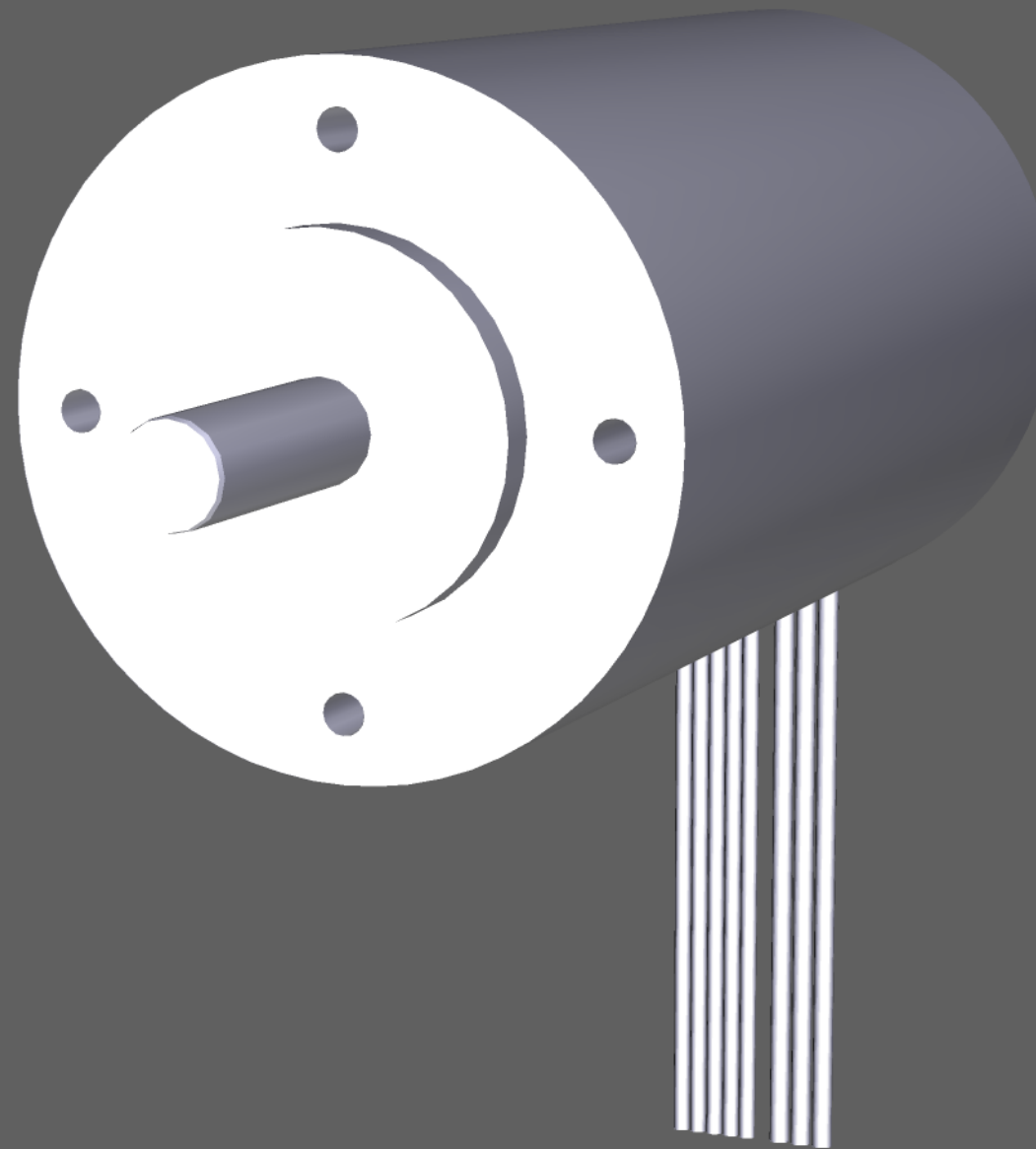
CLICK FOR STORY



### Brushless rotor motors

EC-i motors from maxon motor are designed as brushless, grooved internal rotor motors. The motors are available in 40 mm diameter and in two lengths, 26 mm (50 W) and 36 mm (70 W). The modular system with gearheads, encoders and controllers from the maxon delivery program offers a variety of possible combinations.

[www.maxonmotorusa.com](http://www.maxonmotorusa.com)



Click [HERE](#) for