

Spotlight

Factory Automation



Time-to-digital converter

Agilent Technologies has introduced the first time-to-digital converter (TDC) from its Acqiris product line that features six independent stopwatches for precise timing measurements from a common start event to multiple stop events at a high resolution. The TC890 is suitable for time measurement applications, including laser detection and ranging (LIDAR) for 3D mapping and navigation.

agilent.com

Info Card 297



In-line flow meters

The Omega FV100 series are made up of in-line flow meters that use the vortex shedding measuring principle. As the fluid strikes a bluff body, imparting alternating vortices downstream of the bluff, it creates a vibration on a sensor body containing a piezoelectric crystal. The frequency of the sensor is proportional to the velocity of the fluid and is amplified and converted to a 4 to 20 mA output signal.

omega.com

Info Card 302



3-channel color sensor

Festo has announced what it says is the world's smallest color sensor. Using an internal white LED source, and with a 50 x 50 x 17 mm housing, the SOEC-RT-Q50 can locate objects anywhere within its 12 to 32 mm operating range. The IP67 units have a switching frequency of 500 Hz and 3 independent channels with "teach in" capability for recognizing new colors of objects.

festco.com

Info Card 303

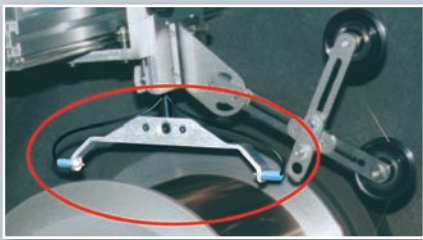


Climate control doors

Rittal Systems has developed a modular system for climate control doors supplied from the warehouse. There are eight different sets of dimensions and six different climate control modules with different output levels and operating voltages. The profile doors, fitted in place of standard doors, for holding the climate control modules are available for enclosures 600, 800 or 1200 mm wide and 1800 or 2000 mm high.

rittal.ca

Info Card 301



Optical flange sensing

Amacoil has announced an optical flange sensing system said to enhance coil winding accuracy. A light transmitter and a receiver create a steady beam of light. When the spool flange breaks the beam, it signals a switch to turn the reverse lever on the Uhing winding drive. Because the system does not rely on the reflective properties of the take-up spool, it can be used with spools of any color, made of virtually any material including metal, paperboard, wood or plastic.

amacoil.com

Info Card 304



Photoelectric sensors

Pepperl+Fuchs has introduced ML20 series photoelectric sensors. The 20 x 11 x 31 mm sensors are available in diffused, divergent, polarized retro-reflective and thru-beam models. Diffused and divergent models offer 1 m and 100 mm sensing ranges, and are suitable for reflector-free and clear object detection, respectively.

am.pepperl-fuchs.com

Info Card 298

Programmable controllers

The Sysmac CP1H programmable controller from Omron has built-in pulse outputs for four axes, analog I/O and serial communications, as well as a USB port. XA CPU units provide 4 input words and 2 output words, and counters provide 4-axis differential phase control. With 4 high-speed encoder inputs up to 1 MHz (single phase) and 4 pulse outputs up to 1 MHz (line driver), CP1H CPUs are suitable for positioning and speed control. Units have UL, CSA and CE approvals.

omron.ca

Info Card 294

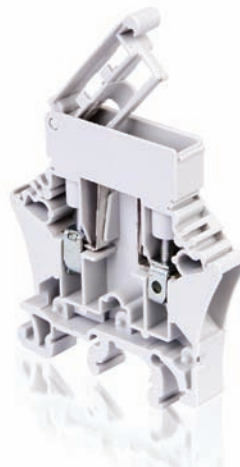


8 channel circuit breaker

The SigNext 8 channel circuit breaker product from emphatec provides eight 24 Vdc rated circuit breakers in a 35 mm wide housing. Less than 4 mm per breaker is said to make the unit even smaller than the most compact DIN rail mounted fuse terminal. A single 24 Vdc input powers all eight supplemental breakers. The manual reset is common to all eight breakers. Modules are available with 0.5, 1.0, 1.5 and 2.0 A breakers. By using the SET and OFF digital inputs, the module can be PLC or DCS controlled. The circuit breaker was designed for use with 24 Vdc power supplies where the available short circuit current does not exceed 800 A.

emphatec.com

Info Card 295

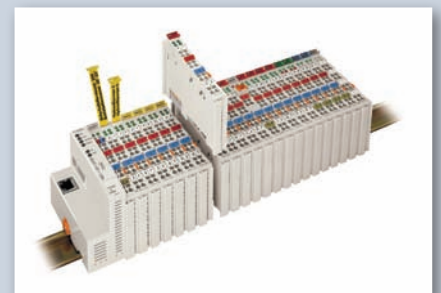
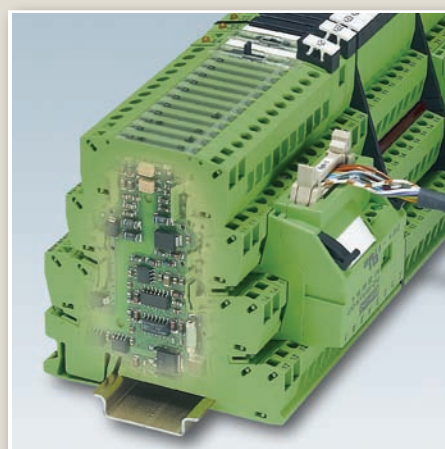


PLC switch module

The 6.2-mm PLC-S...S switch module from Phoenix Contact allows "manual-O-automatic" functions to be implemented in applications for setup, tests and manual/emergency operation. In combination with a PLC connection module (relay or opto coupler), the respective loads can be connected. The switch module and the PLC module with an input voltage of less than or equal to 72 Vac/dc is said to be connected easily via PLC plug-in bridges.

phoenixcontact.ca

Info Card 296



4-channel analog modules

Two 4-channel analog modules for the WAGO-I/O-System have been introduced. Designated the 750-553 (0 to 20 mA) and the 750-555 (4 to 20 mA), both modules are housed in a 12 mm wide, DIN rail mount housing and are compatible with all other 750/753 Series bus-couplers, controllers and I/O modules. Features include: 12 bit resolution; accuracy up to +/-0.1% of FS; LED status indication; one common ground potential for all outputs and electrically isolated outputs to 500 V.

wago.com

Info Card 300



Fail-safe inductive sensor

ifm efector has introduced a fail-safe inductive sensor that does not require a coded magnet or keyed target for safe operation. The 15 mm range product integrates a patented, non-contact inductive sensing principle that is rated up to Category 4 according to EN954-1 for safety applications.

ifmefector.com

Info Card 299