

## Products: Power Transmission

### Right angle gear reducer



The LPK+ right angle gear reducer from alpha gear drives is the right-angle equivalent to the LP+ low-backlash planetary gearhead. The LPK+ is available in five sizes with acceleration torques up to 250 Nm, torsional backlash limited to <math><10</math> arc mins and a peak speed of 6000 rpm. The gearhead comes with ten reduction ratios from  $i = 3$  to  $i = 100$ , with a 1:1 ratio in the LK+. The right angle unit can optionally be supplied with the alpha rack-and-pinion system and alpha shaft couplings.

[alphagear.com](http://alphagear.com)

Info Card 348

### Stainless shaft lock bushings



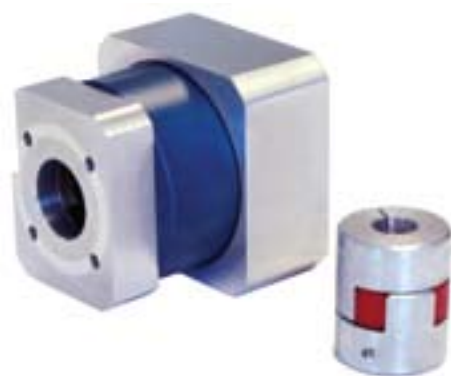
ETP Express stainless steel shaft lock bushings from Zero-Max are designed to lock gears, pulleys, sprockets and other components to a keyless shaft. The devices have a double-walled sleeve filled with the FDA approved food grade actuating pressure medium. When tightened, the single radial screw actuates a piston to compress the medium, thus expanding the bushing walls and creating a solid connection between shaft and hub (click logo for video clip). The bushings handle torque ranges from 40 to 1401 ft lb and hold concentricity to .0008 inch T.I.R. Units are available in

inch and metric sizes from 5/8 to 2 in. or 15 to 50 mm.

[zero-max.com](http://zero-max.com)

Info Card 350

### Mounts fit motor/gearbox



Bishop-Wisecarver Corp. has announced a line of motor mounts to complement its wide range of linear actuators. Each motor mount is supplied as a kit, complete with shaft coupling and mounting hardware. Motor mounts are available to fit any manufacturer's motor or gearbox. The company provides engineering and design services, including CAD drawings, for each motor mount.

[bwc.com/products/lopro.html](http://bwc.com/products/lopro.html) Info Card 351

### Brushless dc motors



Series BSM25 and BSM33 brushless dc motors with Hall sensors from Baldor have permanent magnets on the rotor and windings on the stator. Both series are available from 1/4 to 3 hp designs rated at 320 Vdc bus to provide 1800 rpm. The UL/CE/cUL, TENV units provide an operating range of 0° to 40°C and are made with a premium 200°C moisture resistant wire.

[baldor.com](http://baldor.com)

Info Card 352

### Swing clamp cylinder



The Actuator Division of Parker Hannifin has introduced the redesigned P1M Swing Clamp Cylinder featuring a steel bearing designed to tolerate demanding torques while providing a rotating clamp for added versatility. The low-profile pneumatic model includes flexible porting, long rod bearing and a three-piece bolted construction. The cylinder is available in 32/40/50 mm bore sizes in single-rod configurations with tailored set stroke lengths of 10/20/50 mm, depending on bore size. Choice of clamping direction can be specified as right-hand CW or left-hand CCW rotation.

[parker.com](http://parker.com)

Info Card 353

### General purpose ac motors



AutomationDirect has announced its Iron-Horse general purpose ac motor line includes rolled steel and cast iron styles. The motors are available in single and three-phase models and in 1/3 to 300 hp sizes; all motors have a base speed of 1800 rpm and are electrically reversible. The MTR series 56C frame motors, in 1/3 to 2HP sizes, are housed in rolled steel, TEFC enclosures and are equipped with removable bolt on-bolt off bases. The 3-phase industrial duty MTC series motors are T frame TEFC mo-

tors available in one to 300 hp sizes and feature ribbed designed cast iron frames to ensure maximum cooling.

[automationdirect.com](http://automationdirect.com)

Info Card 354

### Tie rod hydraulic cylinders



Eaton Corp. has announced a line of large bore, tie rod hydraulic cylinders designed for heavy industrial applications. The G-Series large bore cylinders feature stronger materials and a heavy-duty rod cartridge based on nitrided steel. The cylinders, offered in Vickers VG series and Hydro-line HG series products, offer sizes spanning from 10 to 30 in. bore, stroke lengths to 300 in. and greater.

[hydraulics.eaton.com](http://hydraulics.eaton.com)

Info Card 355

### Mini 90° speed reducers



An expanded series of 41 miniature inch and metric right angle speed reducers introduced by Stock Drive Products are designed to operate in reverse, same or dual directions. The 4 oz units come with twin hex nuts for mounting the units onto panels. The 64 x 77 x 29.4 mm reducers can operate at 1800 rpm. Gear ratios range from 1:1 to 25:1, with ratings from 1/20 to 1/8 hp.

[sdp-si.com](http://sdp-si.com)

Info Card 349

## Build Something Brilliant

Nexen's motion control products enable engineers to do something truly brilliant—beyond what they could do before. And they can provide a solid competitive edge. Unique tools such as Nexen's Roller Pinion System enable machines to operate faster, for longer distances, with high precision. In other words, they perform brilliantly.

See the complete line of linear motion control products in the Engineers' Motion Control Toolbox at [www.nexengroup.com/toolbox](http://www.nexengroup.com/toolbox).

Roller Pinion Systems | Rod Locks | Guide Rail Brakes | Linear Couplings

Engineers' Motion Control **TOOLBOX**

**nexen**

© 2007 Nexen Group, Inc. All rights reserved.

Info Card 17

## ROTEX®-GS & RADEX®-NC Precision Zero-Backlash Couplings For Every Application

**ROTEX®-GS** is an economical, high-performance, zero-backlash coupling that can be "tuned" to your system requirements with a simple spider change.

**RADEX®-NC** is an ideal zero backlash servo disk coupling for heavy shock loads and high temperature applications.



- ROTEX®-GS** ROTEX®-GS 6.0 Coupling
- **LOW COST**
  - 14 sizes ranging from 0.2Nm to 3,840Nm
  - **Imperial and Metric Bores** in stock
  - Vibration dampening / Up to 31,800 RPM
  - Great for Spindle & Servo Positioning drives



- RADEX®-NC** RADEX®-NC DK Coupling
- **HIGH-STIFFNESS**
  - Perfect for Servo Positioning drives
  - Maintenance free
  - Low-Inertia / Up to 20,000 RPM
  - Operates to 280°C

Custom designs and machining available. See our website to view the selection criteria for each coupling.

[www.odg.com](http://www.odg.com)

**ODG**  
GEARS • TRANSMISSIONS • COUPLINGS  
WORLD LEADER IN AGRI-MACHINERY VEHICLES

**Ontario Drive & Gear Limited**  
3551 Bleams Road, New Hamburg  
Ontario, Canada N3A 2J1  
Phone: (519) 662-2840 ext. 217  
Fax: (519) 662-2127  
E-mail: [info@odg.com](mailto:info@odg.com)

For advanced drive technology  
**KTR**

TECHNOLOGY • EXPERIENCE • RELIABILITY

Info Card 18