

Products: Power Transmission

Planetary B/BL gearmotors

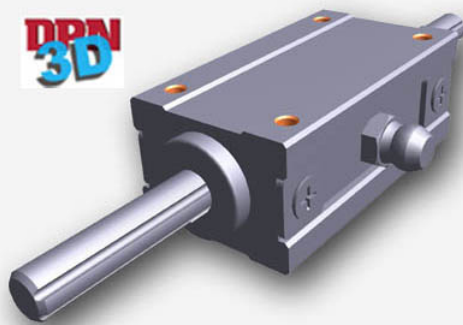


Source Engineering has introduced planetary brush and BL gearmotors available in ratios from 3:1 to 3729:1. The 22 to 56 mm diameter gearmotors can be supplied with 3 to 36 Vdc motors, plastic, powder metal, or cut metal gears, and 2/3 channel quadrature optical encoders. Designed for input speeds up to 6000 rpm continuous, rated torque goes to 392.0 kgcm and maximum torque is typically 3x rated torque.

sei-automation.com

Info Card 317

Ball splines remove backlash



NB Corp. ball splines have recirculating steel balls on the side of the outer race that

are designed for high speed rotation and to eliminate backlash. Units come in 16 standard and customizable shaft sizes with diameters from 4 to 100 mm. There are 7 different nut (the outer cylinder that retains the ball elements) styles. The large surface area of ball contact with grooved shaft is said to result in high load capacity. Material options include Martensite stainless.

nbcorporation.com

Info Card 314

Planetary gearboxes



ADR-Series planetary gearboxes from Apex Dynamics have a design suitable for continuous or cyclic duty operation. Output torque ranges from 14 to 2000 Nm. Ratios in a 1-stage unit are 4/5/7/10/14/20 and in a 2-stage unit are 20/25/35/40/50/70/100/140/200. The spiral bevel gear right-angle units feature a backlash from 2 to 9 arc min, depending on the configuration, and low noise due to a helical planetary gear design.

boschrexroth.ca

Info Card 311

Type 316 shaft collars



Ruland Manufacturing Co. has introduced smooth bore shaft collars in 316 stainless steel, suitable for medical, food processing and pharmaceutical applications. Resistance to chloride corrosion makes the shaft collars suitable for marine applications as well. The collars are available in one- and two-piece clamp-style designs with bore sizes from 1/8 to 2 in. and 3 to 50 mm.

ruland.com

Info Card 308

Monogram motor



Baldor Electric has announced a certified API Standard 547 Monogram motor. Features include: an oversized conduit

box which accommodates stress zones; the Reliance Electric APEX paint system for protection from corrosive elements and UV rays; low noise fan and fan cover design to provide 85dba operation; horizontal-foot mounting; constant level oilers with sight glass; IP55 bearing protection on sleeve bearings; Stainless Steel hardware; and, the SolidSeal Insulation System (a two cycle VPI process capable of passing a water immersion test).

baldor.com

Info Card 316

High thrust rod actuator



The Type CRES high thrust rod actuator from THK is said to produce maximum operating efficiency, while a low voltage dc motor (12 V±15%) contributes to reduced energy consumption. The IP55 unit provides a maximum stroke of 130 mm, making it suitable for packaging machines, automatic seat positioners, panel operating mechanisms, positioning systems, height adjusters and opening/closing mechanisms. Nominal speed ranges are from 15 to 55 mm/s, with a nominal feeding force of 196 to 490 N.

thk.com

Info Card 310

New Family, New Partnership!

SCHMERSAL



Designed to meet Control Category 4 in a series connection, as per EN954-1

- Approved for use in SIL3 applications as per IEC61508
- 3 LED's available on the switch provide diagnostic information
- Serial diagnostics available
- Non-Contact design virtually eliminates mechanical concerns

For more information call 1-800-263-6835

www.vickers-warnick.com

VICKERS WARNICK

Info Card 49

Trying to get the word out?

The challenge should be doing the work, not finding it.

MfgQuote puts the manufacturing world at your fingertips by giving you direct access to RFQ's from buyers worldwide with immediate needs. It's a more efficient—and profitable—way to find the work you're looking for. At MfgQuote.com, you'll find buyers looking for companies just like yours—companies with the expertise and capacity to meet their requirements and deadlines.

\$1.7 billion of manufacturing work so far this year. More than 43,000 buyers, with new ones joining each day. Buyers join because they need suppliers now, and stay because they find long-term partners they'd like to keep.

Where will you be when your ideal customer is looking for you? Take a test drive today at <http://dpn.mfgquote.com> to see the real opportunities you could be missing.

The Manufacturing World at Your Fingertips.™

MFG.COM®