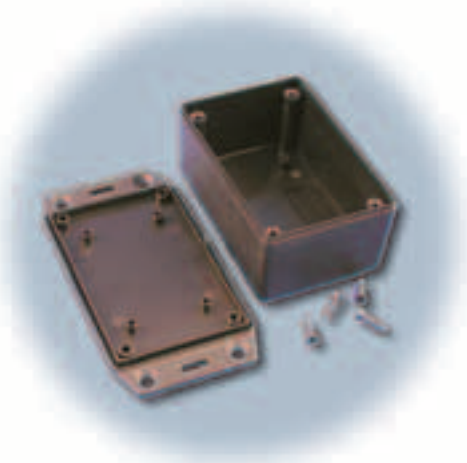


# Spotlight

## Enclosures



### Lidded plastic enclosures

Multipurpose plastic enclosures from **Hammond Manufacturing** include an economical version with flanged lid. Designed to meet IP54, the units are suitable for mounting printed circuit boards horizontally. The flanged lid provides for wall or shelf mounting and enclosure security. The lid is secured with black self-tapping #4 x 0.5 in. Philips screws.

[hammondmfg.com](http://hammondmfg.com)

Info Card 296



### Dust, water resistant outlet

The **Interpower Swiss 16A** dust and water resistant outlet is for equipment rated up to 16A with service at 250 Vac. The molded outlets are approved to the SEV, Electrosuisse standard type 1011 sheet 5934. The outlet is RoHS compliant and has a snap cover with an IP54 rating. Applications include equipment designed for use in a dusty or splashing water environment in Switzerland.

[interpower.com](http://interpower.com)

Info Card 304



### Nylon plastic star knobs

**J.W. Winco, Inc.** has expanded its line of inch size nylon plastic star knobs to include a steel hub unit. Made from black glass filled nylon plastic with matte finish and a zinc-plated steel molded-in hub, the face of the boss is square to the bore and is made of steel. The star knobs are available in metric and inch sizes with a maximum heat tolerance of 230°C.

[jwwinco.com](http://jwwinco.com)

Info Card 302



**DPN**  
**3D**

### Y-handle quick-access pins

A Y-handle design for the LG Series DZUS Lockwell quick release pins available from **Southco** features a cupped recess to protect against accidental triggering of the pushbutton that releases the pin. The Y-handle available in diameters from 3/16 to 1 in. and is manufactured to custom lengths in .001 in. increments. Tension load capability ranges from 200 to 7120 lb.

[southco.com](http://southco.com)

Info Card 303

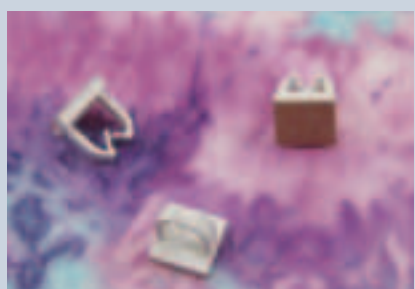


### E-stop switch boxes

A compact, emergency-stop box is among the new range of RoHS compliant polycarbonate enclosures introduced by **EAO Switch Corp.** Measuring 65 x 65 x 57 mm, the enclosure is designed to be used as an accessory for EAO's low-profile Series 84 illuminated 22.5 mm Emergency-stop button. It is available in grey with a bright yellow top. A 16 mm version also exists for EAO's Series 61 e-stops.

[eaoswitch.com](http://eaoswitch.com)

Info Card 301



### Miniature wire saddle

**Micro Plastics** has announced the Mini Wire Saddle Clip, a miniature wire saddle that has an adhesive based clip to eliminate the need for mounting holes. The clip is said to be good for space saving applications due to the small base. Parts are molded in a natural colored nylon 6/6. Free samples are available upon request.

[microplastics.com](http://microplastics.com)

Info Card 306

### Control cabinet design

The Clip Project planning software from **Phoenix Contact**, that allows designers to plan entire rail systems for control cabinets, can now display three-dimensional graphics in real time. The standard STEP and DWG formats are available for three-dimensional graphics that are compatible with different mechanical CAD systems. The project planning program provides users with a selection of control cabinet components such as terminal blocks, surge protection modules, power supply devices, relays and bus modules.

[phoenixcontact.ca](http://phoenixcontact.ca)

Info Card 298



### Lighting and appliance panelboard

**Eaton Corp.** has introduced a line of lighting and appliance panelboard enclosures that incorporate a patent-pending design said to be the first significant change in panel board box and trim designs in more than 50 years. The EZ box and EZ trim designs address traditional panelboard problems such as safety, security, ease and speed of installation, and maintenance. EZ box flanges are bent and coated with a polyester-based paint that dulls the steel edges. Tools are not required to install the EZ trim, helping to shave installation time from minutes to seconds. Each EZ trim includes hangers attached on the right side of the unit.

[eatonelectrical.com](http://eatonelectrical.com)

Info Card 299

### Low Profile Junction Boxes

**Turck Inc.** has introduced low profile M12 eurofast junction boxes said to provide efficiency and versatility for quick-disconnect wiring consolidation. The IP67 rated junction boxes, available in 4- or 8-port with single or dual output, offer multiple home run connector and integral cable options to provide wiring con-



solidation. PVC, PUR and TPE cable jackets provide flexibility for use in different environmental conditions, and home run connectors can be mounted on the top or side of the housing. Integral cables with a 12-pin, 1 1/8-16UN minifast connector are also available for single output junction boxes.

[chartwell.ca](http://chartwell.ca)

Info Card 297



### Double-hinged cabinet

**ProTek Type 12/4** wall-mount cabinets from **Hoffman** are available in double-hinged models with a three-part design for easier front and rear 19-in. equipment access. The ProTek DH cabinet is suitable for applications outside of control areas to protect network equipment from falling dirt, splashing water, dust and other contaminants. The double-hinged units are UL 508 listed Type 12 or Type 4.

[ehoffman.com](http://ehoffman.com)

Info Card 305



### Operator interface panels

**AutomationDirect** has expanded its C-more family of operator interfaces with the C-more line of Micro-Graphic panels. The 4.5 x 3.25 in. panels have five user-programmable function keys with LED indicators and contain 768Kb of project memory. The panels data entry, recipe handling and alarm capabilities.

[automationdirect.com](http://automationdirect.com)

Info Card 300